

Tutorial: taking a swarm directly into a Warré box

Source: Mark Bunce

A swarm is hanging in a small tree conveniently accessible at ground level.



The beekeeper places a Warré box inverted under the swarm. The box has prepared top-bars and a top-bar cloth already fitted. A sheet of cardboard is pinned over them to retain them and form a receptacle for the swarm. The beekeeper gives the branch on which the bees are clustered a sudden shake to take the swarm into the box. The box is then gently inverted on the ground.



The beekeeper props up the edge of the box on a stone to allow the flying bees to enter. At this point he realises that he omitted to place the box on the sheet he brought along for the purpose!

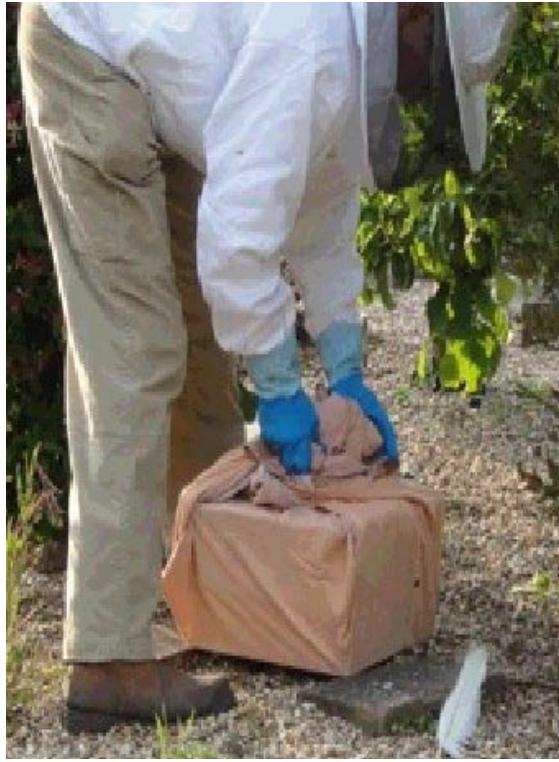
But, no matter, the bees cluster round the base of the box.



By the bottom rim of the box some bees can be seen 'scenting' to lure the flying bees in by exposing their Nasonov glands at the tips of their abdomens.



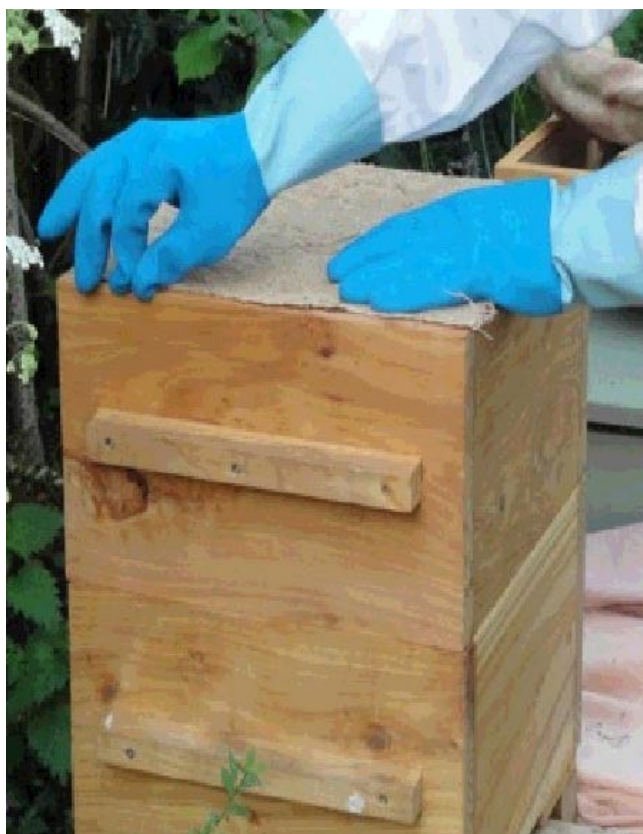
Once all the bees have gone into the Warré box, the beekeeper lifts it onto the sheet and wraps it up to retain the bees during transport to the apiary.



At the apiary, the beekeeper lifts aside the roof and quilt of a prepared Warré hive with one box. He unwraps the swarm's box.



The beekeeper places the box with the swarm on the hive and removes the cardboard.



The beekeeper replaces the quilt and roof. After a short while, bees are seen entering and leaving the hive and performing orientation flights.

